

Master Distributor



**ARMOUR SAFETY PRODUCTS**

Safety Equipment Wholesale & Design

# DUTY

## PERFORMANCE HANDLING GLOVES



+ COMFORT + PROTECTION + DURABILITY

[DUTYGLOVES.COM](https://dutygloves.com)

In recent years, significant strides have been made in the development and enhancement of yarns and coating techniques, revolutionising worker hand protection across multiple industries.

Introducing **DUTY**® ... the brand poised at the forefront to capitalise on and integrate these advancements into a new evolution and extensive range of hand protection.

**DUTY**® **UTILITY** is our mechanical glove range that is designed and tailored for heavier handling environments offering **D-TEC** features that provide high performance, protection and comfort.



**DUTY**® Coated glove range features **infusionTECH** an advanced micro foam technology that promotes stronger bonding to liner yarns for durability, longevity and comfort.

Our cut resistant solution features uniquely developed lightweight CUT F (ANSI A6) yarns offering unparalleled comfort without compromising on protection.



The **DUTY**® Utility range features impact and anti-vibration pad protection, touch screen compatibility, reinforcement in high-wear areas, sweat wipes, and pull-tab convenience. We call this **D-TEC**.

The **DUTY**® **COATED** glove range stands out in today's market with features such as web reinforcement, touch screen compatibility, contact heat protection, and skin-safe materials as standard.

# ADVANCED COAT BONDING TECHNOLOGY FOR PRECISION HANDLING TASKS.

DUTY® Coated gloves feature *infusionTECH*, the advanced micro foam technology to promote stronger bonding to liner yarns for durability, longevity and comfort.



At the heart of our coated glove technology lies *infusionTECH*, a groundbreaking micro foam coating meticulously bonded to the yarn. This innovation not only fosters enhanced airflow, facilitating hand cooling, but also significantly boosts abrasion resistance, thereby extending glove lifespan and reducing long-term hand PPE expense.

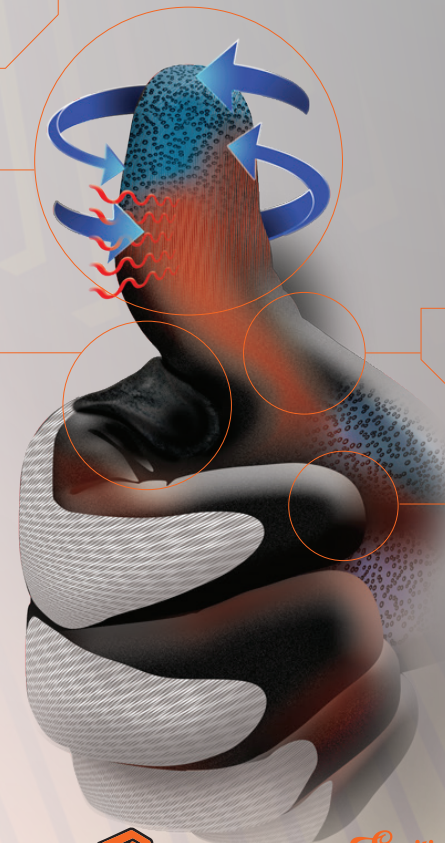
COATED

airCOMFORT

webTOUGH

highABRASION

touchTECH



airCOMFORT

Breathability through the micro foam coating so airflow circulates around the hand for superior comfort.



highABRASION

20% better abrasion performance than equivalent alternatives, greatly extending glove life



webTOUGH

Reinforcing in a high wear area between the thumb and index finger is stronger so glove life is greatly extended.



touchTECH

Touch screen compatible on all areas of the coating for electronic device accessibility.



heatHOLD

Contact heat performance of 100°C for 15 seconds so hot items can be handled for reasonable periods.



healthyHANDS

All gloves undergo Anti-bacterial processing and are OEKO-TEX skin safe certified, so hands are protected from contaminants.



## PALM & FULL COAT PRECISION HANDLING GLOVES.

Two styles of *DUTY*® infusion coating allow for optimum comfort and performance for your particular task at hand.



### DUTY® INFUSION PALM COAT

General-purpose handling built for durability, longevity, and comfort.

SIZES:  
6/XS - 12/3XL  
#DPC



### DUTY® INFUSION FULL COAT

A full Infusion coat that offers 360° hand protection, water resistance & full hand security.

SIZES:  
7/S - 12/3XL  
#DFC



DUTY infusion  
Pack: 12 pr  
Carton: 144 pr



### DUTY® Coated glove features:



#### infusionTECH

Advanced bonding technology allows the micro foam coating to deeply penetrate the liner offering breathability, strength and glove longevity for precision handling tasks.



#### airCOMFORT

Breathability through the micro foam coating so airflow circulates around the hand for superior comfort.



#### highABRASION

20% better abrasion performance than equivalent alternatives, greatly extending glove life



#### webTOUGH

Reinforcing in a high wear area between the thumb and index finger is stronger so glove life is greatly extended.



#### touchTECH

Touch screen compatible on all areas of the coating for electronic device accessibility.



#### heatHOLD

Contact heat performance of 100°C for 15 seconds so hot items can be handled for reasonable periods.



#### healthyHANDS

All gloves undergo Anti-bacterial processing and are OEKO-TEX skin safe certified, so hands are protected from contaminants.



# PALM & HALF COAT PRECISION GRIP GLOVES.

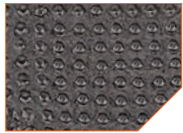
Two styles of *DUTY*® *infusion* grip dot coating allow for optimum comfort and assured grip performance for your particular task at hand.



## DUTY® INFUSION PALM COAT DOT GRIP

Palm coat with raised dot pattern for assured grip, handling, and performance.

SIZES:  
7/S - 12/3XL  
#DPCD



DUTY infusion  
Pack: 12 pr  
Carton: 144 pr



## DUTY® INFUSION HALF COAT DOT GRIP

A half *infusion* coat that offers knuckle protection, palm dot assured grip, water resistance and full hand security.

SIZES:  
7/S - 12/3XL  
#DHCD



### DUTY® Coated glove features:



#### infusionTECH

Advanced bonding technology allows the micro foam coating to deeply penetrate the liner offering breathability, strength and glove longevity for precision handling tasks.



#### airCOMFORT

Breathability through the micro foam coating so airflow circulates around the hand for superior comfort.



#### highABRASION

20% better abrasion performance than equivalent alternatives, greatly extending glove life



#### webTOUGH

Reinforcing in a high wear area between the thumb and index finger is stronger so glove life is greatly extended.



#### touchTECH

Touch screen compatible on all areas of the coating for electronic device accessibility.



#### heatHOLD

Contact heat performance of 100°C for 15 seconds so hot items can be handled for reasonable periods.



#### healthyHANDS

All gloves undergo Anti-bacterial processing and are OEKO-TEX skin safe certified, so hands are protected from contaminants.



## PREMIUM CUT PROTECTION HANDLING GLOVE.

DUTY® CUT F is engineered for the highest level of cut performance, comfort, durability, and precision handling.



### DUTY® PALM COAT CUT F

Our liner design prioritises comfort and agility, reducing hand fatigue while maintaining the highest available cut performance rating. Engineered features extend glove lifespan, complemented by a nitrile palm coating ensuring a secure grip in both dry and oily conditions, meeting essential criteria for general handling and cut environments.



DUTY CUT F  
Pack: 12 pr  
Carton: 72 pr

SIZES:  
6 XS - 12 3XL  
#DOBCF



### DUTY® CUT F glove features:



#### highABRASION

25% better abrasion performance than equivalent alternatives, greatly extending glove life



#### webTOUGH

Reinforcing in a high wear area between the thumb and index finger is stronger so glove life is greatly extended.



#### touchTECH

Touch screen compatible on all areas of the coating for electronic device accessibility.



#### heatHOLD

Contact heat performance of 100°C for 15 seconds so hot items can be handled for reasonable periods.



#### healthyHANDS

All gloves undergo Anti-bacterial processing and are OEKO-TEX skin safe certified, so hands are protected from contaminants.



# IMPACT PROTECTION ON THE BACK OF HAND FOR KNUCKLES & FINGERS.

The *DUTY® Utility* glove range brings the latest mechanical glove technologies together to ensure optimal performance, protection, and comfort in heavy handling and trade environments. We call this *D-TEC*



The *D-TEC* system harnesses advancements in high-performance glove materials and manufacturing techniques to offer a feature-rich hand protection solution tailored specifically for heavy, general, and trade working environments.

*D-TEC* glove features where required include;



**impactTPR**

TPR offers flexible impact protection on the back of hand for knuckles & fingers.



**antiVIBE**

Anti-Vibration pads built-in to allow an assured grip and maintain better control.



**velcroCLOSE**

Adjustable velcro wrist closure ensures both easy hand access and a firm comfortable fit.



**dutySHIELD**

Durable materials built-in to high contact areas for glove longevity, durability and performance.



**touchTECH**

Touch screen compatible on all areas of the fingertip for electronic device accessibility.



**pullTABS**

Cuff & finger pull tabs for easy glove donning or when removing fingerless glove styles.



**sweatWIPE**

Terry cloth material on back of the thumb for sweat removal in hot environments.

UTILITY

velcroCLOSE

touchTECH

dutySHIELD

pullTABS

impactTPR



# HEAVY DUTY HANDLING GLOVES.

Two styles of heavy duty utility handling gloves feature *D-TEC* for optimum comfort and performance in tough conditions.

## ENFORCER

Heavy duty construction with anti-vibration gel inserts and reinforced layers for extreme handling conditions.

SIZES:  
7/S - 11/2XL  
#DEUG



## GRANGER

Exceptionally durable premium grain leather palm with a breathable nylon back of hand specifically designed for rural or engineering work.

SIZES:  
7/S - 11/2XL  
#DGUG



DUTY Utility  
Pack: 6 pr  
Carton: 72 pr

EN 388:2016+A1:2018

D-TEC Utility glove features include:



### impactTPR

TPR offers flexible impact protection on the back of hand for knuckles & fingers.



### antiVIBE

Anti-Vibration pads built-in to allow an assured grip and maintain better control.



### velcroCLOSE

Adjustable velcro wrist closure ensures both easy hand access and a firm comfortable fit.



### dutySHIELD

Durable materials built-in to high contact areas for glove longevity, durability and performance.



### touchTECH

Touch screen compatible on all areas of the fingertip for electronic device accessibility.



### pullTABS

Cuff & finger pull tabs for easy glove donning or when removing fingerless glove styles.



### sweatWIPE

Terry cloth material on back of the thumb for sweat removal in hot environments.





## GENERAL HANDLING GLOVES.

Two styles of general handling utility gloves feature our *D-TEC* system for optimum comfort, performance and longevity.

### HANDLER

Durable & lightweight for general handling warehouse and packing tasks.

SIZES:  
7/S - 11/2XL  
#DHUG



### WORKER

General purpose utility glove with reinforced palm and fingers for daily general work.

SIZES:  
7/S - 11/2XL  
#DWUG



DUTY Utility  
Pack: 6 pr  
Carton: 72 pr

EN 388:2016+A1:2018

D-TEC Utility glove features include:



#### impactTPR

TPR offers flexible impact protection on the back of hand for knuckles & fingers.



#### velcroCLOSE

Adjustable velcro wrist closure ensures both easy hand access and a firm comfortable fit.



#### dutySHIELD

Durable materials built-in to high contact areas for glove longevity, durability and performance.



#### touchTECH

Touch screen compatible on all areas of the fingertip for electronic device accessibility.



#### pullTABS

Cuff & finger pull tabs for easy glove donning or when removing fingerless glove styles.



#### sweatWIPE

Terry cloth material on back of the thumb for sweat removal in hot environments.



## TRADE HANDLING GLOVES.

Two styles of handling utility glove feature our *D-TEC* system for optimum comfort performance and dexterity in trade handling situations.

### MASTER

Fingerless with palm cushioning for pneumatic or vibration tasks that require an assured grip and feel.

SIZES:  
7/S - 11/2XL  
#DMUG



### BUILDER

Open index finger & thumb plus reinforced palm for easy selection of fixings. Designed specifically with the tradesman in mind.

SIZES:  
7/S - 11/2XL  
#DBUG



DUTY Utility  
Pack: 6 pr  
Carton: 72 pr

EN 388:2016+A1:2018

D-TEC Utility glove features include:



#### impactTPR

TPR offers flexible impact protection on the back of hand for knuckles & fingers.



#### antiVIBE

Anti-Vibration pads built-in to allow an assured grip and maintain better control.



#### velcroCLOSE

Adjustable velcro wrist closure ensures both easy hand access and a firm comfortable fit.



#### dutySHIELD

Durable materials built-in to high contact areas for glove longevity, durability and performance.



#### touchTECH

Touch screen compatible on all areas of the fingertip for electronic device accessibility.



#### pullTABS

Cuff & finger pull tabs for easy glove donning or when removing fingerless glove styles.



#### sweatWIPE

Terry cloth material on back of the thumb for sweat removal in hot environments.





## **ARMOUR SAFETY PRODUCTS**

Safety Equipment Wholesale & Design

### **MASTER DISTRIBUTORS**

#### **NEW ZEALAND:**

UNIT 8, 85 ONEHUNGA MALL RD,  
AUCKLAND, 1061

**FREEPHONE: 0800 148 383**  
**WWW.ARMOURSAFETY.CO.NZ**

#### **AUSTRALIA:**

51 CANOPY DRIVE, BONGIN  
QUEENSLAND 4213

**FREEPHONE: 1300 41 43 31**  
**WWW.ARMOURSAFETY.COM.AU**

**DUTYGLOVES.COM**